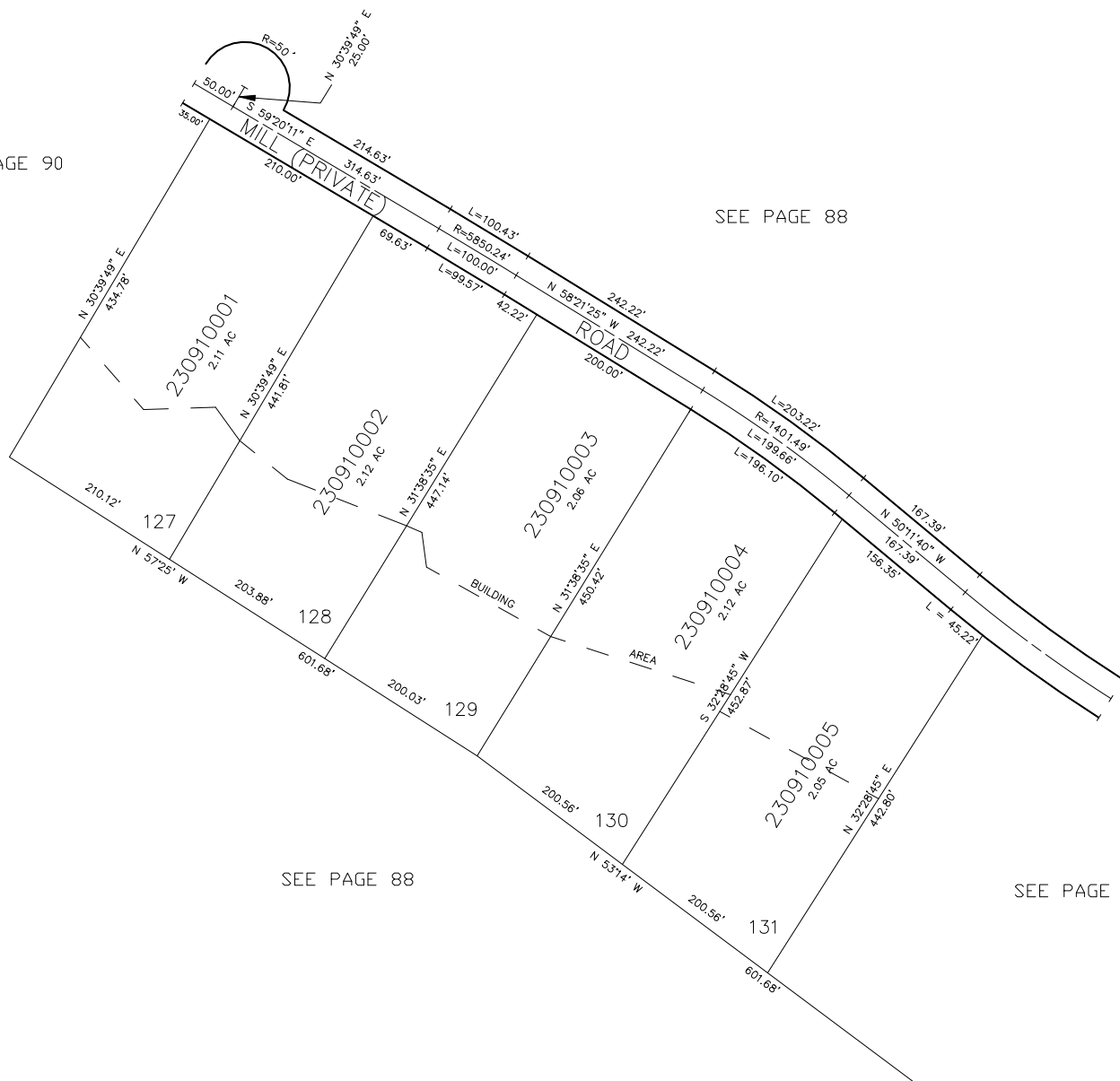


PART OF SECTIONS 11,12,13,14, T.6N., R.3E., S.L.B. & M.
CAUSEY ESTATES SUBDIVISION NO. 3
 LOTS 127-131
 IN WEBER COUNTY
 SCALE 1" = 100'

TAXING UNIT: 58

SEE PAGE 90

SEE PAGE 88



SEE PAGE 88

SEE PAGE 92

FOR COMPLETE ENG DATA SEE
 ORIGINAL DEDICATION PLAT IN
 BOOK 24, PAGES 38,39,40 OF RECORDS.